

PRICE LIST

BASED ON DECEMBER 2021 NDIS PRICE GUIDE

Respite/ Short Term Accommodation- rates per day

Integrated support for self-care, accommodation, food & activities in a centre or group residence for short periods. Includes all expenses in 24 hour period with no additional loading. May be used for up to 14 consecutive days, then weekly rates apply.

Ratios	1:1	1:2	1:3	1:4
Weekday	\$1728.29 (01_058_0115_1_1)	\$954.85 (01_054_0115_1_1)	\$697.04 (01_062_0115_1_1)	\$568.13 (01_045_0115_1_1)
Saturday	\$2,202.21 (01_059_0115_1_1)	\$1,191.81 (01_055_0115_1_1)	\$855.01 (01_063_0115_1_1)	\$686.61 (01_051_0115_1_1)
Sunday	\$2,782.77 (01_060_0115_1_1)	\$1,482.09 (01_056_0115_1_1)	\$1,048.53 (01_064_0115_1_1)	\$831.75 (01_052_0115_1_1)
Public holiday	\$3,363.09 (01_061_0115_1_1)	\$1,772.25 (01_057_0115_1_1)	\$1,241.97 (1_065_0115_1_1)	\$976.83 (01_053_0115_1_1)



Assistance with Self-Care Activities- rate per hour

(National Non-Remote (MMM 1-5))

Assisting with, and/or supervising, personal tasks of daily life to develop skills of the participant to live as autonomously as possible in circumstances where the support delivered is very high intensity and a more skilled or experienced support worker is required.

Levels	1	2	3
Weekday-TTP	\$58.80 01_300_0104_1_1_T	\$63.35 01_400_0104_1_1_T	\$66.54 01_500_0104_1_1_T
Weekday Afternoon-TTP	\$64.71 01_301_0104_1_1_T	\$69.73 01_401_0104_1_1_T	\$73.24 01_501_0104_1_1_T
Saturday-TTP	\$82.48 01_302_0104_1_1_T	\$88.87 01_402_0104_1_1_T	\$93.35 01_502_0104_1_1_T
Sunday-TTP	\$106.17 01_303_0104_1_1_T	\$114.40 01_403_0104_1_1_T	\$120.16 01_503_0104_1_1_T
Public holiday-TTP	\$129.86 01_304_0104_1_1_T	\$139.92 01_404_0104_1_1_T	\$146.97 01_504_0104_1_1_T
Active Overnight-TTP	\$65.90 01_305_0104_1_1_T	\$71.00 01_405_0104_1_1_T	\$74.58 01_505_0104_1_1_T



Access Community, Social and Rec Activities- rate per hour

(National Non-Remote (MMM 1-5))

Rate for different levels of clients & skilled workers -Access Community, Social & Rec Activities

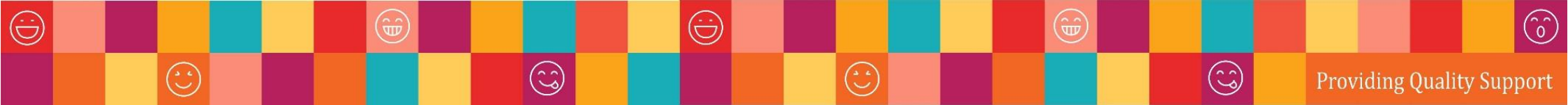
Day	Levels 1	Levels 2	Levels 3
Weekday-TTP	\$58.80 04_300_0104_1_1_T	\$63.35 04_400_0104_1_1_T	\$66.54 04_500_0104_1_1_T
Weekday Afternoon-TTP	\$64.71 04_301_0104_1_1_T	\$69.73 04_401_0104_1_1_T	\$73.24 04_501_0104_1_1_T
Saturday-TTP	\$82.48 04_302_0104_1_1_T	\$88.87 04_402_0104_1_1_T	\$93.35 04_502_0104_1_1_T
Sunday-TTP	\$106.17 04_303_0104_1_1_T	\$114.40 04_403_0104_1_1_T	\$120.16 04_503_0104_1_1_T
Public holiday-TTP	\$129.86 04_304_0104_1_1_T	\$139.92 04_404_0104_1_1_T	\$146.97 04_504_0104_1_1_T

(Where the support delivered is high intensity and a more skilled or experienced support worker is required.)



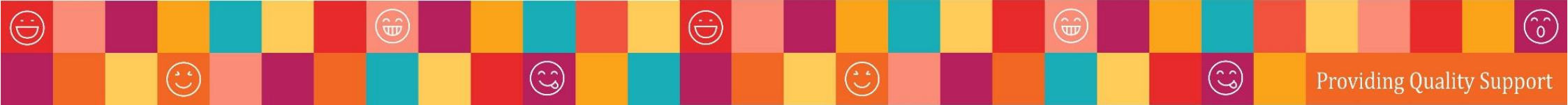
Standard - Group Activities in the Community

Day	1:2 Ratio	1:3 Ratio	1:4 Ratio	1:5 Ratio
Weekday-TTP	\$32.93 04_111_0136_6_1_T	\$24.30 04_120_0136_6_1_T	\$19.99 04_136_0136_6_1_T	\$17.40 04_141_0136_6_1_T
Weekday Afternoon-TTP	\$36.24 04_114_0136_6_1_T	\$26.75 04_123_0136_6_1_T	\$22.00 04_137_0136_6_1_T	\$19.15 04_142_0136_6_1_T
Saturday-TTP	\$46.19 04_112_0136_6_1_T	\$34.09 04_121_0136_6_1_T	\$28.04 04_138_0136_6_1_T	\$24.41 04_143_0136_6_1_T
Sunday-TTP	\$59.46 04_113_0136_6_1_T	\$43.88 04_122_0136_6_1_T	\$36.10 04_139_0136_6_1_T	\$31.43 04_144_0136_6_1_T
Public Holiday-TTP	\$72.72 04_128_0136_6_1_T	\$53.68 04_129_0136_6_1_T	\$44.15 04_140_0136_6_1_T	\$38.44 04_145_0136_6_1_T



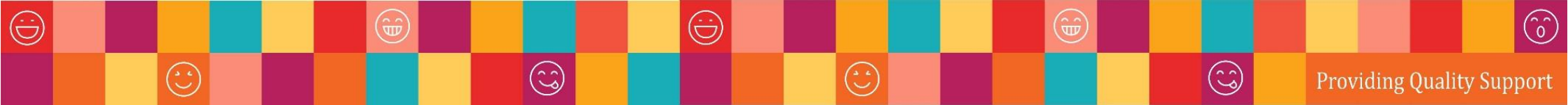
Complex - Group Activities in the Community

Day	1:2 Ratio	1:3 Ratio	1:4 Ratio	1:5 Ratio
Weekday-TTP	\$35.48 04_116_0104_6_1_T	\$26.18 04_124_0104_6_1_T	\$21.54 04_146_0104_6_1_T	\$18.75 04_151_0104_6_1_T
Weekday Afternoon-TTP	\$39.05 04_119_0104_6_1_T	\$28.82 04_127_0104_6_1_T	\$23.71 04_147_0104_6_1_T	\$20.64 04_152_0104_6_1_T
Saturday-TTP	\$49.77 04_117_0104_6_1_T	\$36.73 04_125_0104_6_1_T	\$30.22 04_148_0104_6_1_T	\$26.31 04_153_0104_6_1_T
Sunday-TTP	\$64.06 04_118_0104_6_1_T	\$47.29 04_126_0104_6_1_T	\$38.90 04_149_0104_6_1_T	\$33.86 04_154_0104_6_1_T
Public holiday-TTP	\$78.36 04_130_0104_6_1_T	\$57.83 04_131_0104_6_1_T	\$47.57 04_150_0104_6_1_T	\$41.42 04_155_0104_6_1_T



Standard-Group Activities in a Centre

Day	1:1 Ratio	1:2 Ratio	1:3 Ratio	1:4 Ratio	1:5 Ratio
Weekday-TTP	\$60.95 04_160_0136_6_1_T	\$35.08 04_165_0136_6_1_T	\$26.45 04_170_0136_6_1_T	\$22.14 04_175_0136_6_1_T	\$19.55 04_180_0136_6_1_T
Weekday Afternoon-TTP	\$66.86 04_161_0136_6_1_T	\$38.39 04_166_0136_6_1_T	\$28.90 04_171_0136_6_1_T	\$24.15 04_176_0136_6_1_T	\$21.30 04_181_0136_6_1_T
Saturday-TTP	\$84.63 04_162_0136_6_1_T	\$48.34 04_167_0136_6_1_T	\$36.24 04_172_0136_6_1_T	\$30.19 04_177_0136_6_1_T	\$26.56 04_182_0136_6_1_T
Sunday-TTP	\$108.32 04_163_0136_6_1_T	\$61.61 04_168_0136_6_1_T	\$46.03 04_173_0136_6_1_T	\$38.25 04_178_0136_6_1_T	\$33.58 04_183_0136_6_1_T
Public holiday-TTP	\$132.01 04_164_0136_6_1_T	\$74.87 04_169_0136_6_1_T	\$55.83 04_174_0136_6_1_T	\$46.30 04_179_0136_6_1_T	\$40.59 04_184_0136_6_1_T



Complex - Group Activities in a Centre

Day	1:1 Ratio	1:2 Ratio	1:3 Ratio	1:4 Ratio	1:5 Ratio
Weekday-TTP	\$65.50 04_185_0104_6_1_T	\$37.63 04_190_0104_6_1_T	\$28.33 04_195_0104_6_1_T	\$23.69 04_200_0104_6_1_T	\$20.90 04_205_0104_6_1_T
Weekday Afternoon-TTP	\$71.88 04_186_0104_6_1_T	\$41.20 04_191_0104_6_1_T	\$30.97 04_196_0104_6_1_T	\$25.86 04_201_0104_6_1_T	\$22.79 04_206_0104_6_1_T
Saturday-TTP	\$91.02 04_187_0104_6_1_T	\$51.92 04_192_0104_6_1_T	\$38.88 04_197_0104_6_1_T	\$32.37 04_202_0104_6_1_T	\$28.46 04_207_0104_6_1_T
Sunday-TTP	\$116.55 04_188_0104_6_1_T	\$66.21 04_193_0104_6_1_T	\$49.44 04_198_0104_6_1_T	\$41.05 04_203_0104_6_1_T	\$36.01 04_208_0104_6_1_T
Public holiday-TTP	\$142.07 04_189_0104_6_1_T	\$80.51 04_194_0104_6_1_T	\$59.98 04_199_0104_6_1_T	\$49.72 04_204_0104_6_1_T	\$43.57 04_209_0104_6_1_T