



16th, 17th & 18th
APRIL 2021



SHOWING THE DOWNS SINCE 1860

HERITAGE BANK TOOWOOMBA ROYAL SHOW

The production of the very best in the region had been the aim of agriculturalists and horticulturalists on the Darling Downs since 1860, when the foundation bodies of the Darling Downs Agricultural Society and the Drayton and Toowoomba Agricultural and Horticultural Society were formed.

Established to promote the improvement of stock and the develop the pastoral, agricultural and horticultural resources of the colony of Queensland, the Royal Agricultural Society continues to not only uphold this vision of agricultural excellence but to take a more proactive role in the education of young people within our communities.

The 156th Heritage Bank Toowoomba Royal Show will be held from the 16th- 18th April 2021. It is expected in excess of 30,000 patrons will attend over the three days.

Entertainment will again be a major driver in attendance and will be located strategically around the grounds. Specific timed events will not only improve traffic flow but will encourage patrons to plan and lengthen their time spent at the show.

Educating young people about the importance of agriculture is one of the charters of the society and we are again planning to increase our Edible Garden and Little Hands on the Farm programs.



In excess of 12 000 competitive entries were judged across 33 competition categories at the 2019 show. Due to COVID 19 restrictions we are anticipating both a reduction in the number of classes and entries but the Society is planning as many competition categories as possible for the 2021 show.

Over 200 volunteers assist during the show. Without their dedication and effort the show could not function. Our theme for 2021 will be “enhancing community engagement” and again we plan to donate up to \$30,000 worth of complimentary passes and payments to community groups for services provided.



I would like to invite you to participate as an exhibitor at the 2021 Heritage Bank Toowoomba Royal Show.

- ✓ Flexible site sizes
- ✓ Cost effective site pricing
- ✓ Electricity connection at no additional cost
- ✓ Complimentary public address announcements
- ✓ Carpeted wall panels (inside sites only)
- ✓ Complimentary listing and link on the RASQ website

INDOOR SITES

✚ 3mt x 3mt (min)	\$495
✚ Extra Frontage	\$165 per metre

NB. Sites 35FP – 40FP & 47FP – 51FP will be restricted to Food/Beverage Exhibitors

NORTHERN PARK

✚ Commercial 3mt depth	\$135 per metre frontage
✚ Catering 3mt depth	\$200 per metre frontage

CENTRAL PARK

✚ Commercial 3mt depth	\$115 per metre frontage
✚ Catering 3mt depth	\$150 per metre frontage

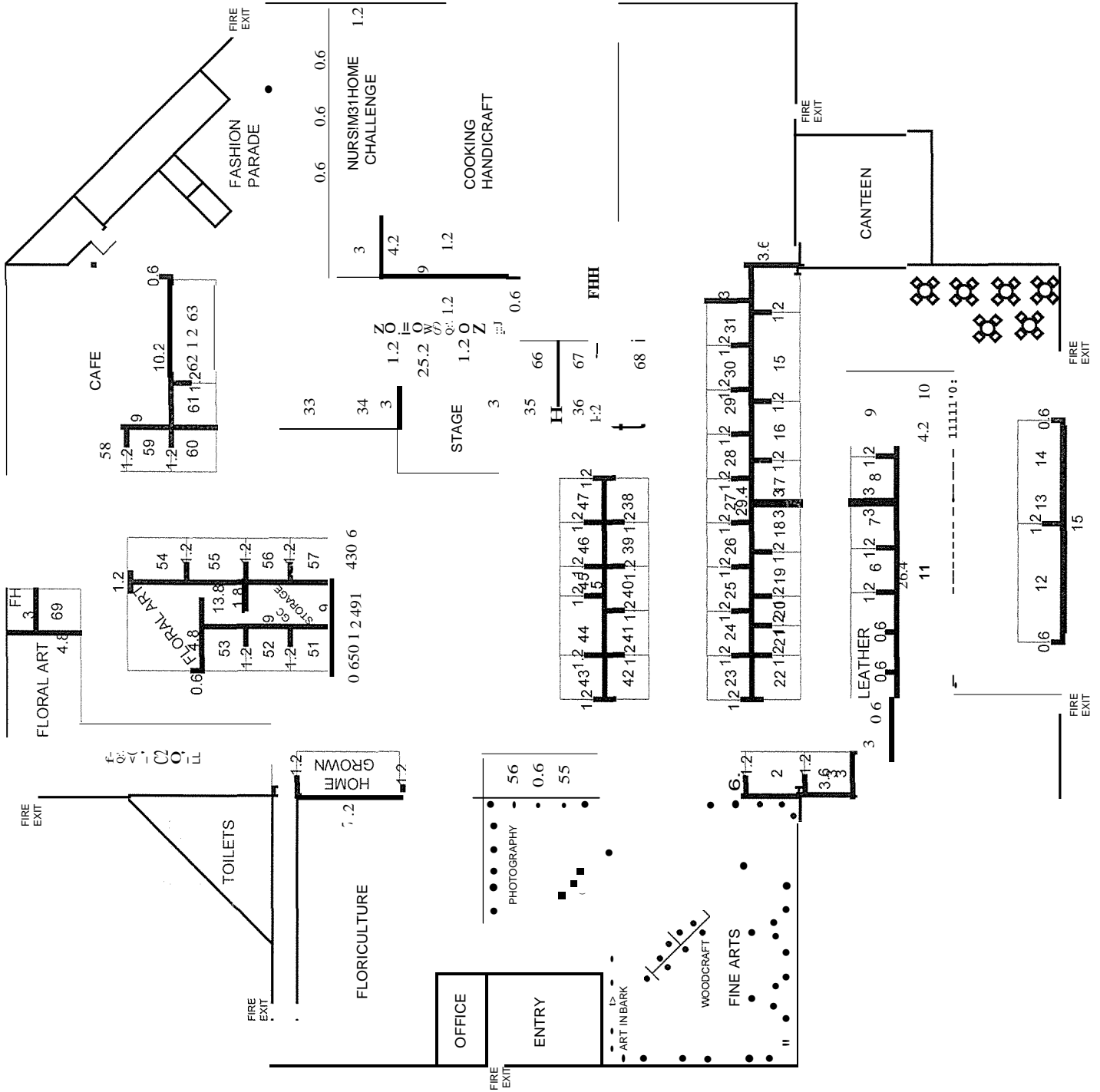
VILLAGE GREEN

✚ Commercial & Catering 3mt depth	\$115 per metre frontage
--------------------------------------	--------------------------

Sites in the Village Green & Central Park requiring more than 3 metres depth will be charged by the square metre starting at:

✚ Commercial	\$35 per square metre
✚ Catering	\$50 per square metre

FOUNDERS PAVILION SITE LAYOUT



NORTHERN PARK, CENTRAL PARK AND VILLAGE GREEN SITE MAP LAYOUT

